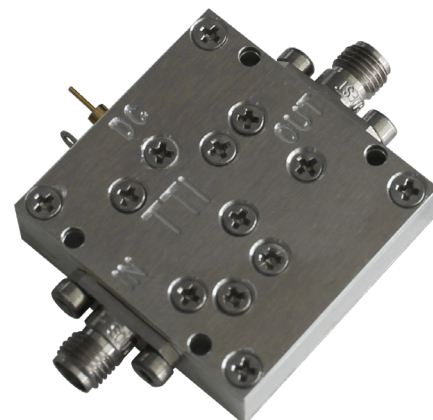


Wideband LNA for radioastronomy & satellite communications



USING CUTTING-EDGE TECHNOLOGY, THE NEW LNA/LNB FAMILY OFFERS OUTSTANDING PERFORMANCE IN OUTDOOR OPERATIONS FOR RADIOASTRONOMY APPLICATIONS



RF performance

Operating frequency range	4-20 GHz
Input VSWR	$\leq 1.4:1$
Output VSWR	$\leq 1.6:1$
Noise figure	≤ 4 dB
Gain	26 dB to 29 dB
Gain flatness	≤ 1.5 dB full band
Gain-out-of-band	$< (\text{Avg gain } \pm 3 \text{ dB}) @ 0\text{-}40 \text{ GHz}$
$P_{1\text{dB}}$	≥ 14 dBm
Voltage (Nominal)	+8 to +16 VDC
Power consumption	$< 2\text{W}$ (at 12 VDC)
Impedance	50 ohm

Mechanical & interfaces

Input connector	SMA
Output connector	SMA
DC connector	Solder pin and ground lug attached to the chassis
Dimensions (L x W x H)	33.2 x 34.6 x 9.9 mm
Weight	32 g

Environmental

Operating temperature	0° C to 50 °C
Storage temperature	-30 °C to 60 °C
EMC protection	Internal linear DC regulator, reverse voltage protection and DC filter feed-through

Key Features

- * Compact package
- * Wideband
- * Low noise figure

